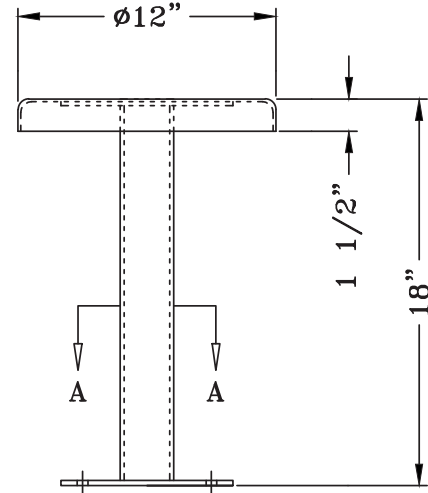
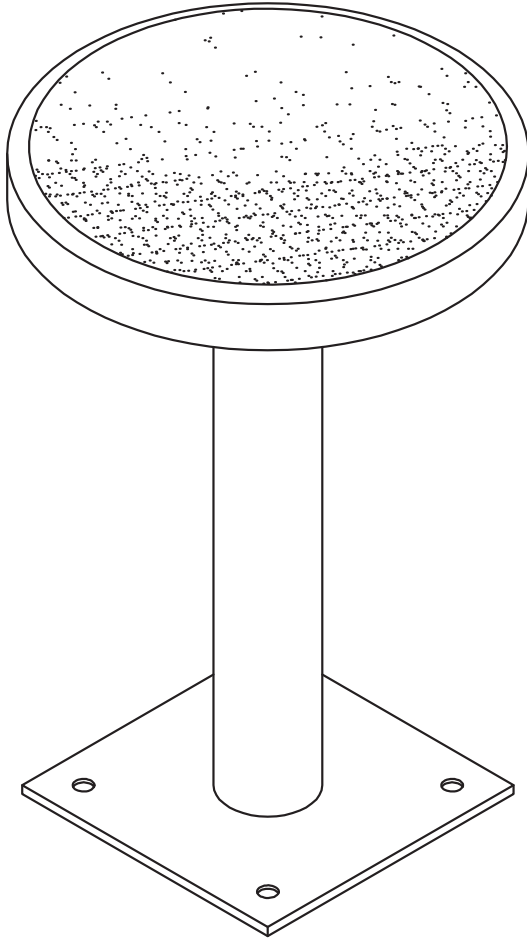


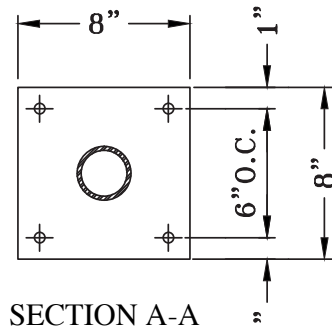
THE G-S COMPANY

web WWW.G-SCO.COM • email SALES@G-SCO.COM • phone 410-284-9549 • fax 410-282-6499

GS6010 Floor Mounted Detention Stool



ELEVATION



SECTION A-A

SPECIFICATIONS

- Seat top: 14Ga Type 304 stainless steel top Ø12" with 1 1/2" flange.
- Back plate: 7" x 7" x 3/16" steel plate welded to seat top and tube post.
- Support: Ø2 1/2" nom. (2 7/8" O.D.) schedule 40 pipe welded to seat and base plate.
- Base plate: 8" x 8" x 1/4" steel plate with 4 holes for Ø3/8" anchors.
- Steel cuff ring: Ø1/2" rod bent into a 3" O.D. half ring.
- Finish: #4 finish for stainless steel stool top, one coat of rust inhibitive red prime for all ferrous surfaces.

Special order finishes and materials available upon request.