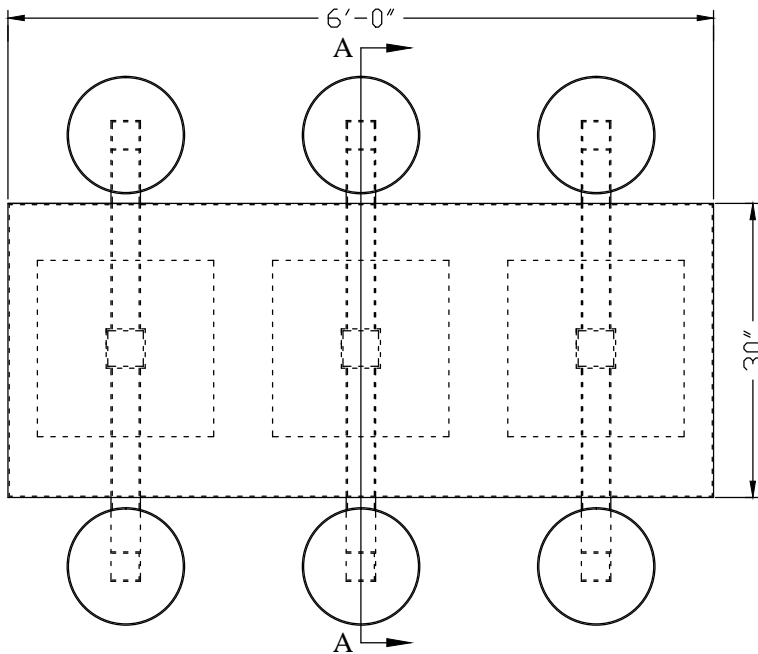
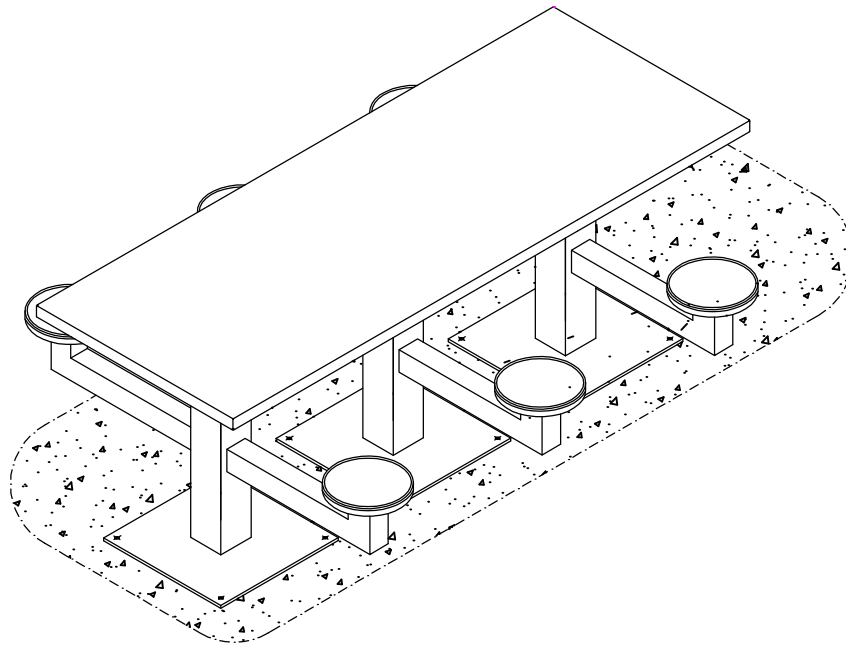
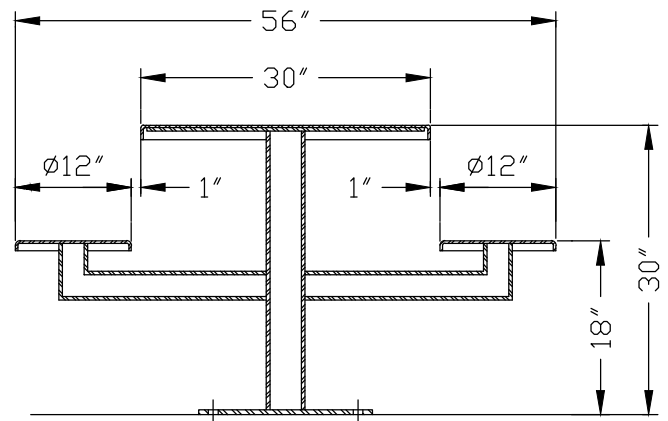


GS8012 FLOOR MOUNT 6 MAN PEDESTAL TABLE



PLAN VIEW
4 MAN PEDESTAL TABLE



A-A
VERTICAL SECTION
THROUGH 4 MAN PEDESTAL TABLE

SPECIFICATIONS

6 MAN PEDESTAL FLOOR MOUNT TABLE

- Table top: 10Ga Stainless steel pan with 1 1/2" flanges at all 4 sides.
- Back plate: 3/16" carbon steel plate welded to stainless steel top.
- Pedestal: 4"x4"x3/16" steel tube welded to base plate.
- Seat: Ø12" stainless steel polished seats.
- Seat arms: 3"x3"x3/16" steel tube.
- Base plate: 18"x18"x1/4" steel plate with 4 holes for Ø3/8" Torx Secure - Bolt Sleeve Anchors.
- Standard Finish: #4 finish for stainless steel top and seats, one coat of rust inhibitive red primer for all ferrous (non stainless) surfaces.

Other finishes and materials available upon request as a special order.